

SPOTLIGHT ON
CV2

Technology News Release

**PERFORMANCE
ASSURED**

Using the same shock absorbing elastomeric isolators as used in the first generation chassis', CP Cases new **CV2 Extruded Aluminum chassis** has been successfully performance tested to highly demanding MIL-STD 810G levels.

Working with industry leaders in product testing and certification; TUV SUD's experts tested the CV2's ability to function during and after the most challenging shock, vibration and transit scenarios.

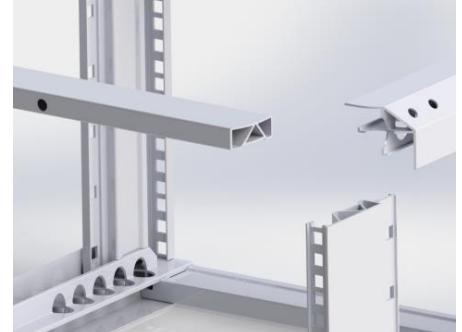
Amazon & ERack enclosures were configured with 35kg and 65kg payloads to assess performance in laboratory test conditions.

In-the-field performance of CV2 was assured earlier this year when TUV issued certification to demonstrate the new chassis complied to MIL-STD-810G in Transit Drop, Random Vibration and Loose Cargo endurance testing.

CP Cases announces the introduction of **CV2** the high performance **Extruded Aluminum 19"** rackmount chassis used inside ERack, Amazon Rack and SatRack products.

Combining precision manufacturing techniques with innovative design, this new approach to producing rackmount chassis brings outstanding durability and performance during shock & vibration testing.

Each element of the chassis employs multiple hollow triangular sections to achieve an extraordinary strength to weight ratio in comparison with other approaches to chassis manufacturing techniques.



Utilizing high-tensile tempered aluminum alloy, specifically selected for structural strength, in combination with stainless steel fastenings provides significant benefits in increased stability and rigidity.

The extruded alloy profiles with high beam-strength, enable bigger payloads to be integrated into a rack enclosure without upgrading to a heavier steel construction. Managing the total weight of an enclosure minimizes handling risks and reduces shipping costs.



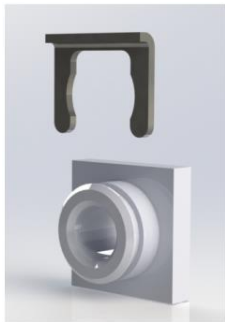
19 inch Rack-mounting

Stainless steel floating captive cage-nuts (M6 or 10-32 thread) can be easily installed by the user into the 9.5mm square holes, according to user requirements and are located in accordance with IEC 60297, the international standard for 19" structures.

The radiused internal corners of the square cage-nut hole, provides great resistance to fatigue or crack propagation during particularly extreme vibration scenarios.



The unique profile of the chassis vertical 'cage-nut rails' cleverly clamps the equipment's 19" panel without crushing the cage-nut tabs upon the rear of the panel.



SuperNut®, available as an optional extra, is a unique alternative to the conventional cage-nut, it also has 'float' and is available with M6 or 10-32 thread.

Its key purpose is to provide increased resistance to becoming accidentally dislodged during heavy-handed installation of equipment.

Always in-stock sizes range from 2U to 18U in height and off-the-shelf options in depth are 350, 480, 610, 740 and 870mm

Non-standard U-heights, specific chassis depths or half-width sizes can be made available according to individual requests.

CP Cases Inc. 12010 Industrial Park Rd., Unit 1, Bishopville, MD21813, USA. Tel: (410) 352 9450 - Email: sales.usa@cpcases.com

ACCESSORIES AVAILABLE

Fixed Support Rails.

Stainless steel fixed rails used to support heavy or deep equipment and are supplied as a pair, self color with all fastenings included.

Earthing /Grounding point.

Earthing / grounding strap attachment points can be fitted to allow for discharge of static electricity from the inner rack chassis and its mounted equipment.

Additional Isolators

Stiffer elastomeric mounts are available for payloads in excess of 50kg. Elastomeric mounts can also be fitted in tandem at each corner of the internal suspended frame, to give a total of 16 shock absorbing mounts.

EasyGlide Compatible

The Extruded Chassis is compatible with EZG3 chassis removal system.

Alternative Isolators

For scenarios where specific vibration patterns require management, wire-rope mounts with a suitable coil configuration can be provided.

Reinforcing braces

Additional bracing struts and customized brackets can be provided to support very heavy non-rackmount payloads.

SuperNut

Alternative to the standard cage-nut, supplied with screws & washers